



**BEARE HOMES**  
*YOU BETTER GET ONE*

ABN: 66 116 222 005

*No Hidden Costs. Just move in.  
Fixed Price Contract with  
Master Builders Association*

# Want to Build 4 Bedrooms Rural on a Budget?

Have a Look at This!

**The Lucy 2 - \$220,000- inc. GST**

*4 Bedrooms*

*Ensuite to Master Bedroom*

*109 square metres of Internal Living area*

*53 square metres of timber decking Verandah*

*Colorbond Roof and metal clad external walls*

*2700mm minimum high ceilings*

*Fully gyprocked internally and painted*

*2 x External taps*

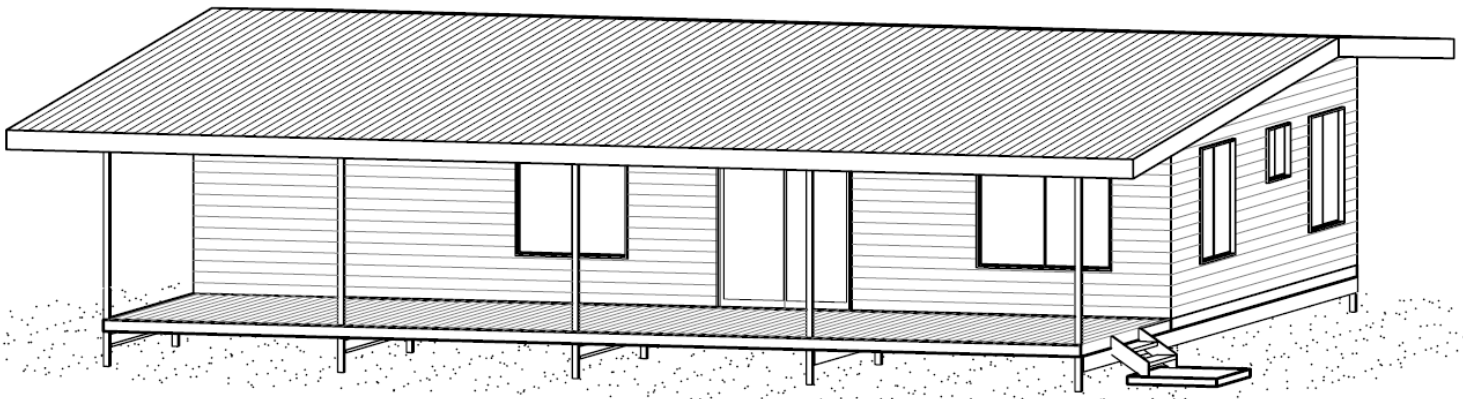
*Kitchen Includes:*

*2000mm Breakfast Bar*

*Fridge Space*

*Stainless Steel Electric Cooktop*

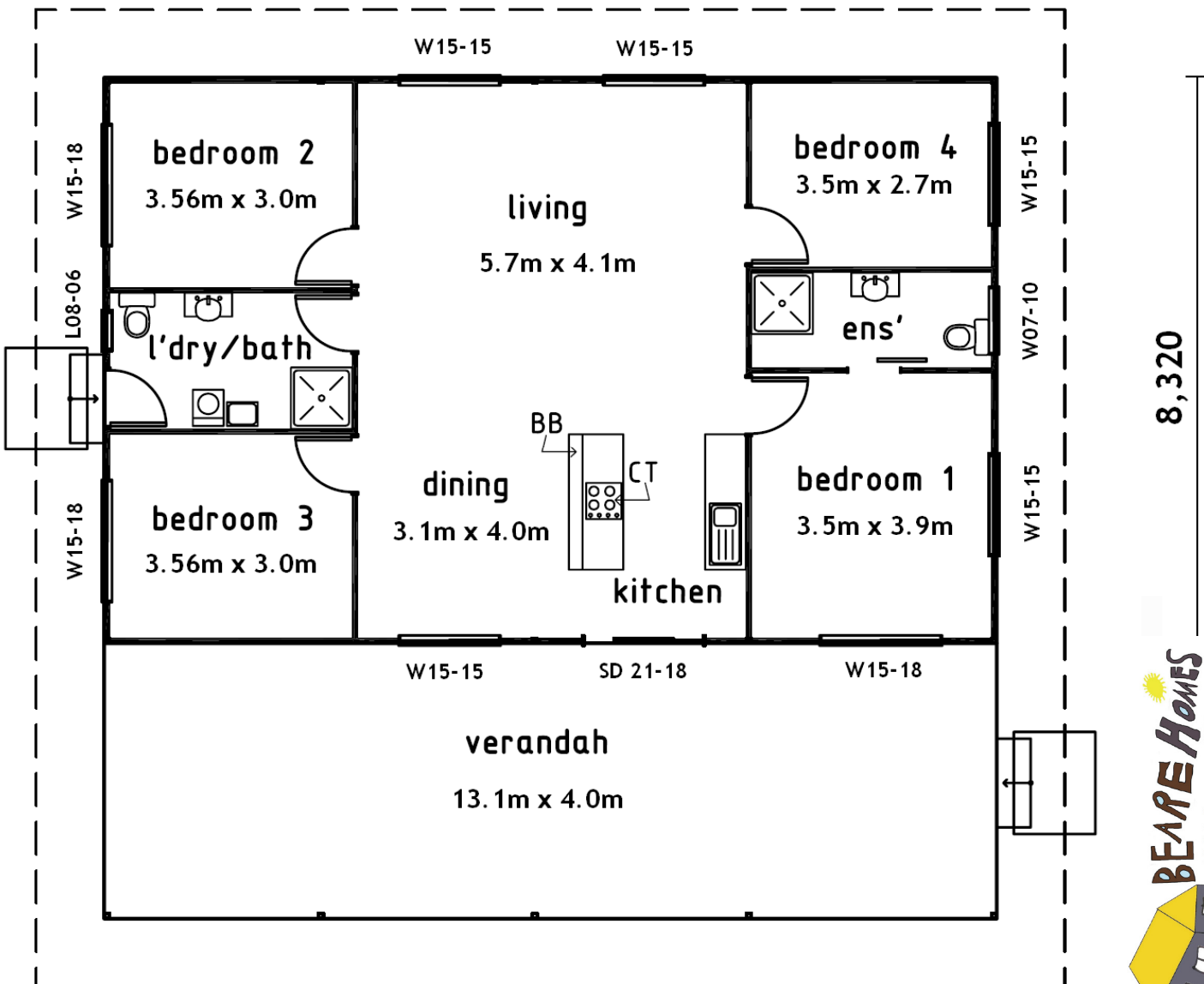
*Sink with single bowl and single drainer*



# LUCY 2

13,100

FLOOR AREAS	
LIVING	108.99m <sup>2</sup>
VERANDAH	52.92m <sup>2</sup>
	161.92m <sup>2</sup>



8,320



ABN: 66 116 222 005  
 Email: [bearehomes@bigpond.com](mailto:bearehomes@bigpond.com)  
 Website: [www.bearehomes.com.au](http://www.bearehomes.com.au)  
 Ph: (08) 8932 9100  
 Fax: (08) 8932 9200