



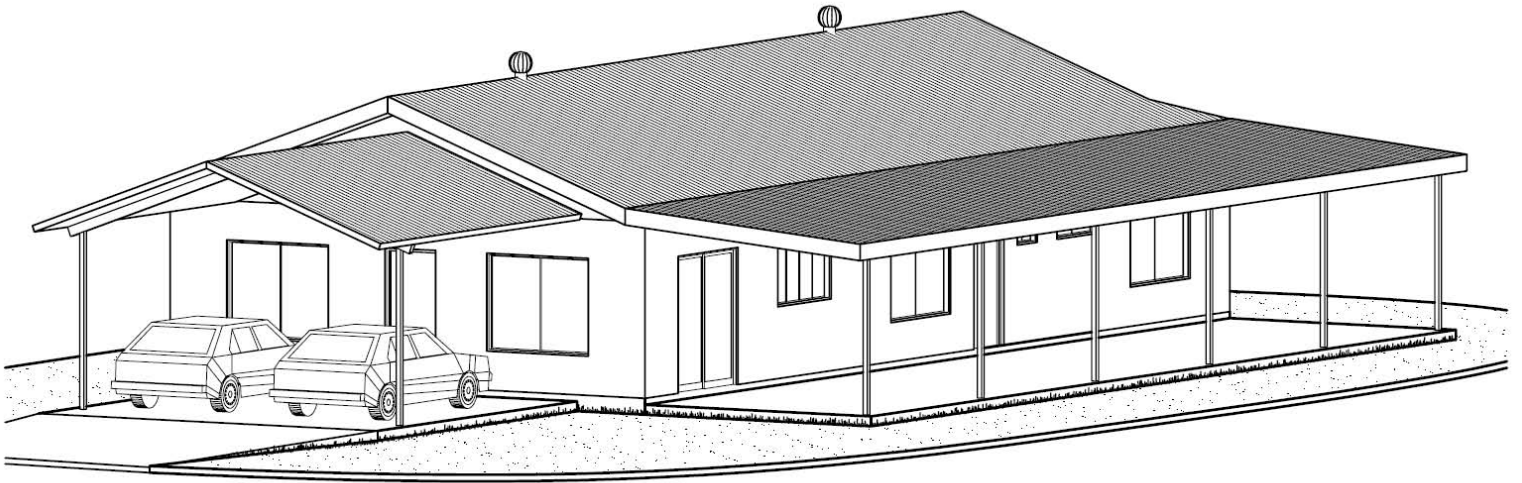
**BEARE HOMES**  
*YOU BETTER GET ONE*

ABN: 66 116 222 005

*No Hidden Costs. Just move in.  
Fixed Price Contract with TCA*

## **The GRIZZLY**

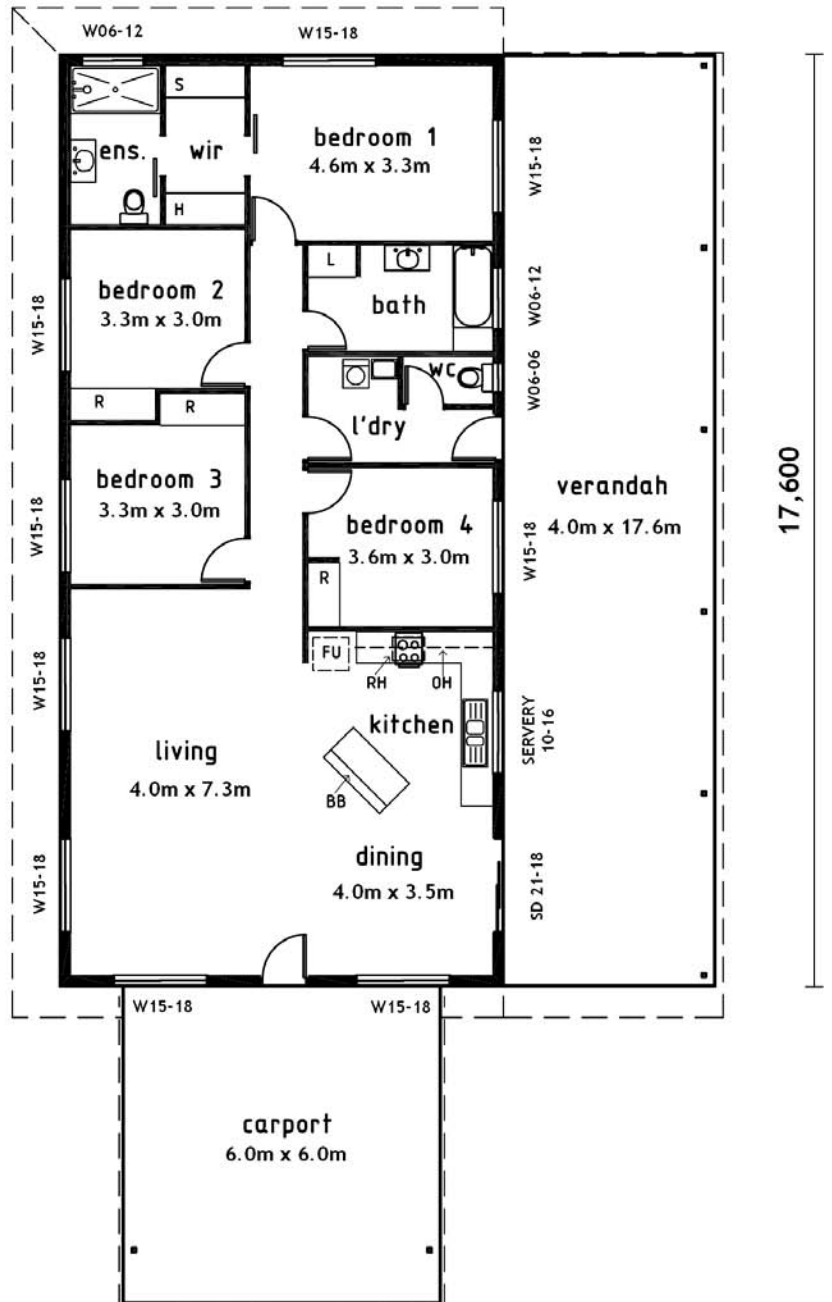
*148 square metres of Internal Living area  
70 square metres of Verandah including concrete  
Colorbond Roof with heavy weight Thermo-foil Insulation  
Security Screens to all sliding windows & glass sliding doors  
Louvre Bars to all louvre windows  
Ceramic floor tiles throughout  
2700mm high ceilings  
Fully rendered and painted  
Built in wardrobes to all bedrooms including walk in robe to Master  
Built in linen cupboard  
Ensuite to Master bedroom  
2 x External taps  
Kitchen Includes:  
Breakfast Bar Island bench  
Overhead cupboards  
Fridge Unit  
Stainless Steel Electric Underbench Oven, Electric Cooktop & Rangehood  
Sink with 1 ½ bowls and 2 drainers*



8,400

# GRIZZLY

FLOOR AREAS	
LIVING	147.84m <sup>2</sup>
VERANDAH	70.40m <sup>2</sup>
CARPORT	36.00m <sup>2</sup>
	254.24m <sup>2</sup>



**BEARE HOMES**  
YOU BETTER GET ONE

ABN: 66 116 222 005

Ph: (08) 8932 9100 Email: bearehomes@bigpond.com  
Fax: (08) 8932 9200 Website: www.bearehomes.com.au