

**Design 306-B**



*162 sqm of Internal Living area*

*31 sqm of Verandah including concrete*

*39 sqm Lockable Double Garage*

*Store Room*

*Separate Living, Lounge & Dining Rooms*

*Colorbond Roof with medium weight Thermo-foil Insulation*

*2700mm high ceilings*

*Solar Hot Water System*

*Security Screens to all sliding windows & glass sliding doors*

*Louvre Bars to all louvre windows*

*Ceramic floor tiles throughout*

*Fully rendered and painted*

*Built in Linen & Broom cupboards*

*Built in wardrobes to all bedrooms including walk in robe to Master*

*- Your choice of Mirror sliders or Laminate swing doors*

*Ensuite to Master bedroom*

*Separate bath and shower in main bathroom*

*2 x External taps*

*Kitchen Includes:*

*Pantry*

*Overhead cupboards*

*Fridge Unit*

*Stainless Steel Electric Underbench Oven, Ceran Cooktop & Rangehood*

*Hob Top to Bench*

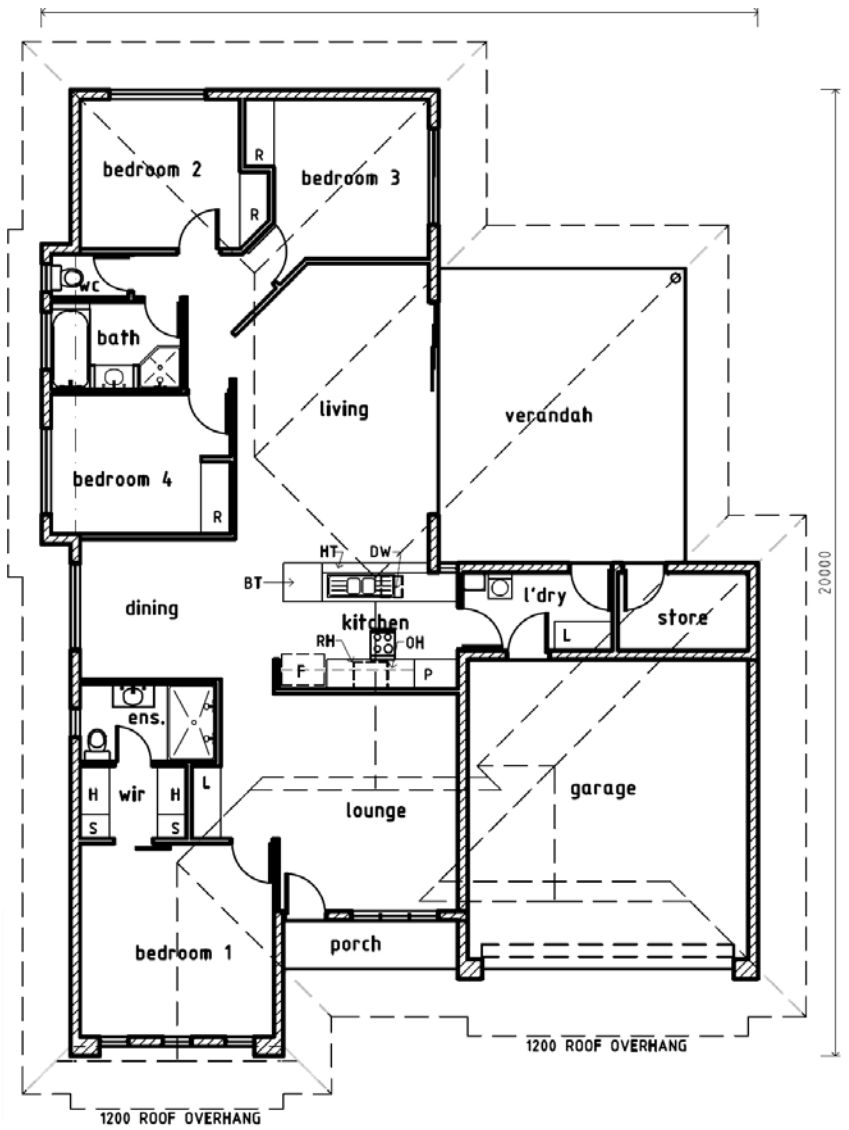
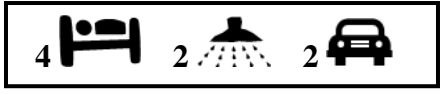
*Sink with 1 ½ bowls and 2 drainers*

*Provision for Diswasher*



# DESIGN-306B

FLOOR AREAS	
LIVING	162.56m <sup>2</sup>
GARAGE	38.80m <sup>2</sup>
VERANDAH	31.11m <sup>2</sup>
PORCH	3.60m <sup>2</sup>
	236.07m <sup>2</sup>



Ph: (08) 8932 9100 Email: bearehomes@bigpond.com  
 Fax: (08) 8932 9200 Website: www.bearehomes.com.au