



**BEARE HOMES**  
*YOU BETTER GET ONE*

ABN: 66 116 222 005

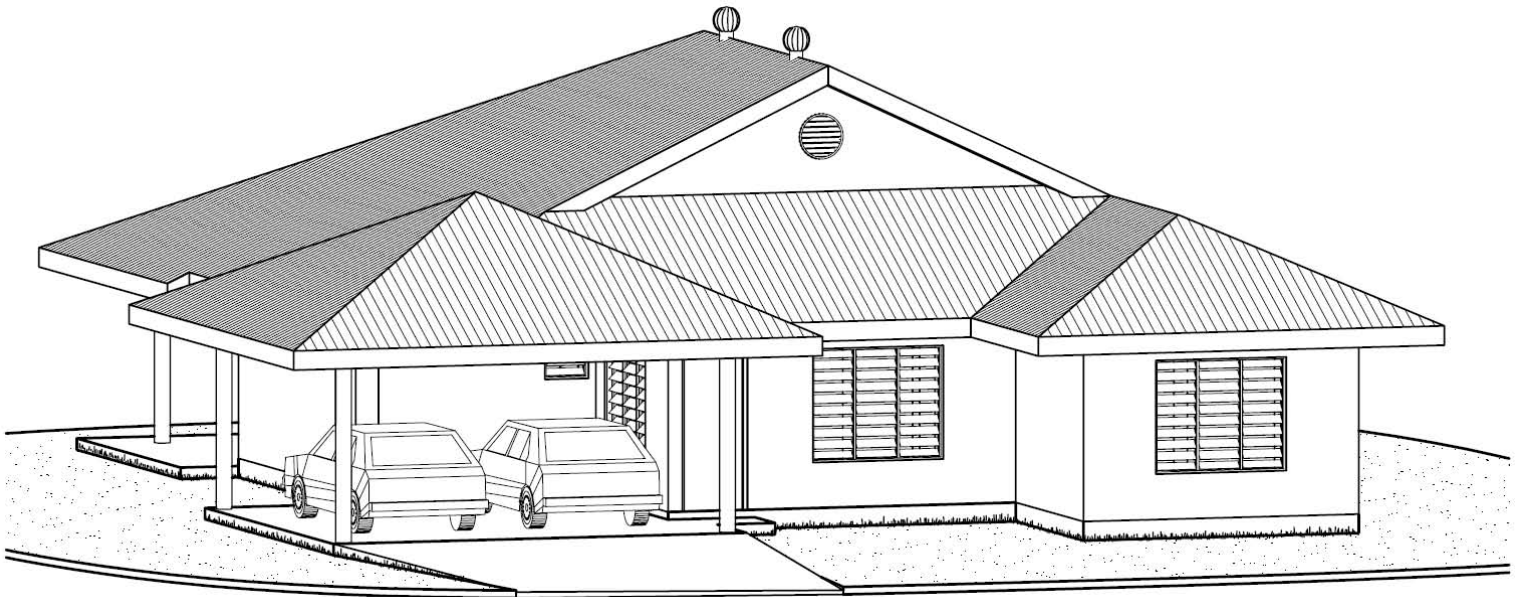
*No Hidden Costs. Just move in.  
Fixed Price Contract with TCA*

## **Design 102-B**

*137 square metres of Internal Living area  
28 square metres of Verandah including concrete  
Colorbond Roof with heavy weight Thermo-foil Insulation  
Security Screens to all sliding windows & glass sliding doors  
Louvre Bars to all louvre windows  
Solar Hot Water System  
Ceramic floor tiles throughout  
2700mm high ceilings  
Fully rendered and painted  
Built in wardrobes to all bedrooms including walk in robe to Master  
Ensuite to Master bedroom  
Built in linen & broom cupboards  
2 x External taps  
Kitchen Includes:  
Breakfast Bar  
Door straight to Verandah  
Pantry  
Overhead Cupboards  
Fridge Unit  
Stainless Steel Electric Underbench Oven, Electric Cooktop & Rangehood  
Sink with 1 ½ bowls and 2 drainers*

**Multi-Award Winning Builder**

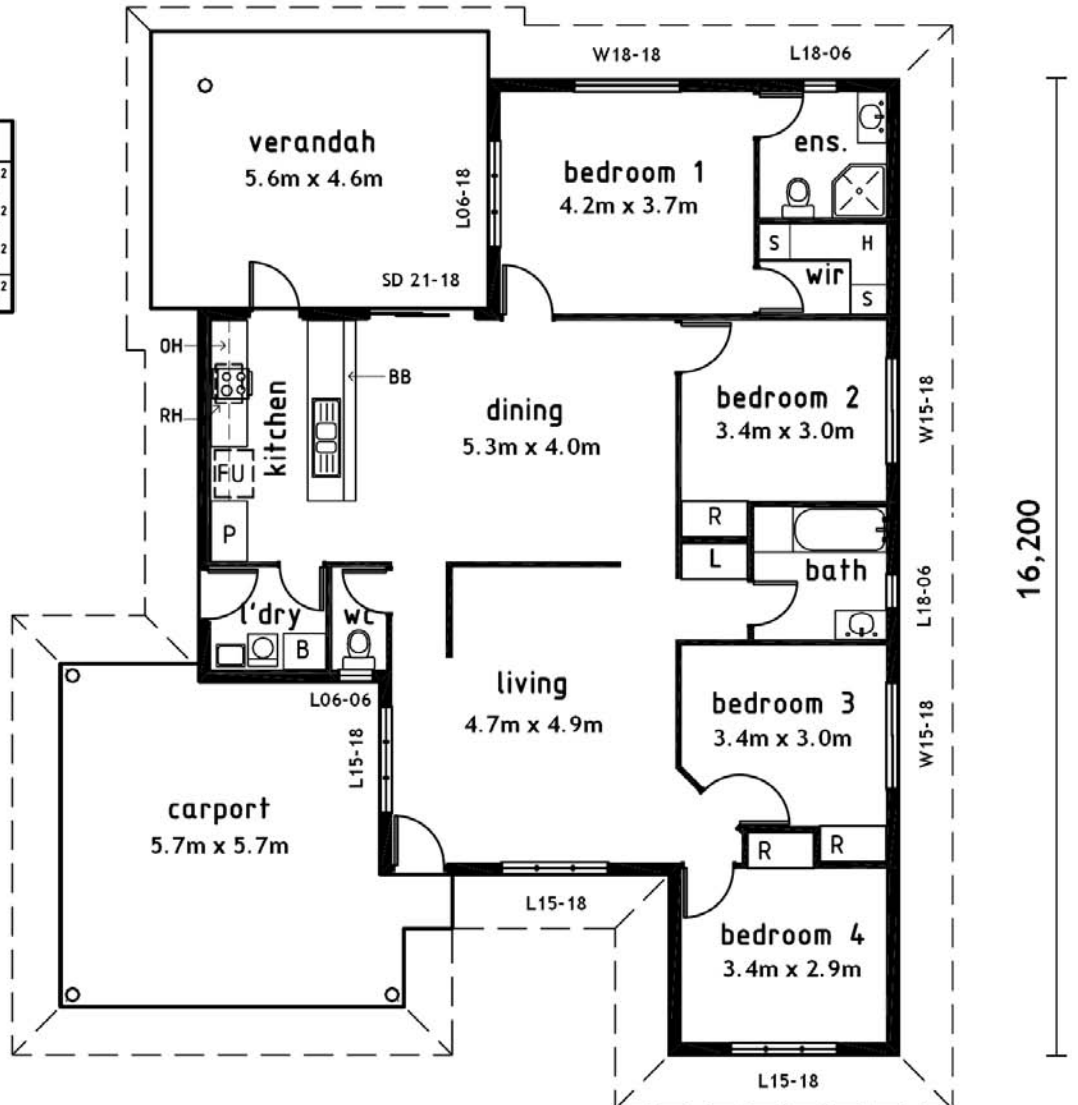




**DESIGN - 102-B**

11,600

SLAB AREAS	
LIVING	136.68m <sup>2</sup>
CARPORT/PORCH	30.91m <sup>2</sup>
VERANDAH	25.76m <sup>2</sup>
	193.35m <sup>2</sup>



Ph: (08) 8932 9100 Email: bearehomes@bigpond.com  
 Fax: (08) 8932 9200 Website: www.bearehomes.com.au