



# Beare Homes

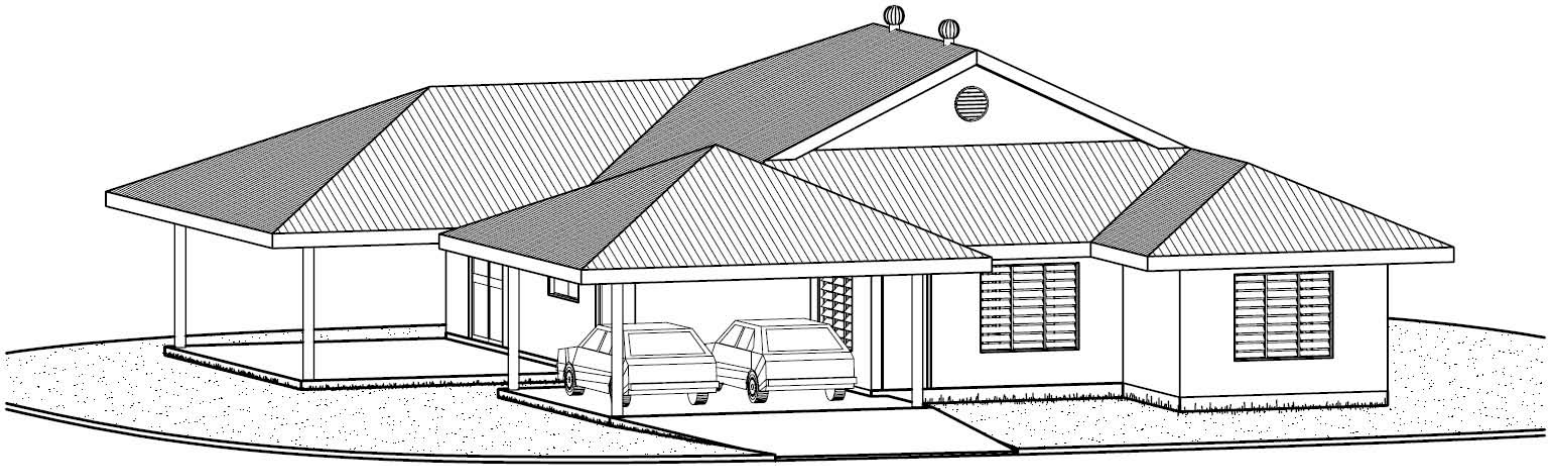
ABN: 66 116 222 005

*No Hidden Costs. Just move in.  
Fixed Price Contract with TCA*

## Design 102

*154 square metres of Internal Living area  
37 square metres of Verandah including concrete  
Colorbond Roof with heavy weight Thermo-foil Insulation  
Solar Hot Water System  
Security Screens to all sliding windows & glass sliding doors  
Louvre Bars to all louvre windows  
Ceramic floor tiles throughout  
2700mm high ceilings  
Fully rendered and painted  
Built in wardrobes to all bedrooms including walk in robe to Master  
Built in linen & broom cupboards  
Ensuite to Master bedroom  
Separate bath and shower in main bathroom  
2 x External taps  
Kitchen Includes:  
Pantry  
Overhead cupboards  
Fridge Unit  
Stainless Steel Electric Underbench Oven, Electric Cooktop & Rangehood  
Sink with 1 ½ bowls and 2 drainers*

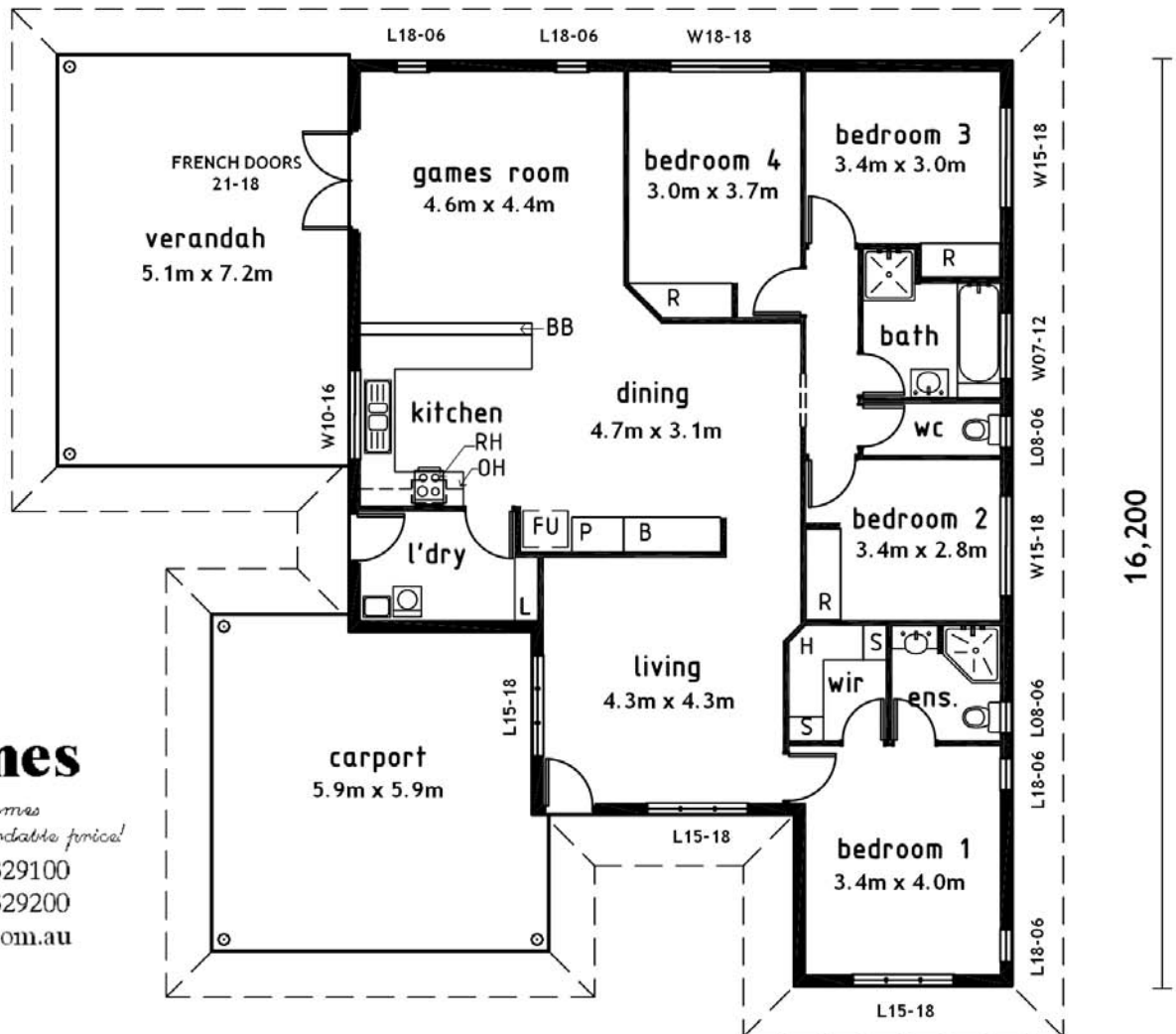
*Quality homes at an affordable price!*



# DESIGN - 102

11,600

SLAB AREAS	
LIVING	154.28m <sup>2</sup>
VERANDAH	36.72m <sup>2</sup>
CARPORT	32.80m <sup>2</sup>
	223.80m <sup>2</sup>



## Beare Homes

*Quality homes at an affordable price!*

Ph: (08) 89329100

Fax: (08) 89329200

bearehomes@tpg.com.au