



BEARE HOMES
YOU BETTER GET ONE

ABN: 66 116 222 005

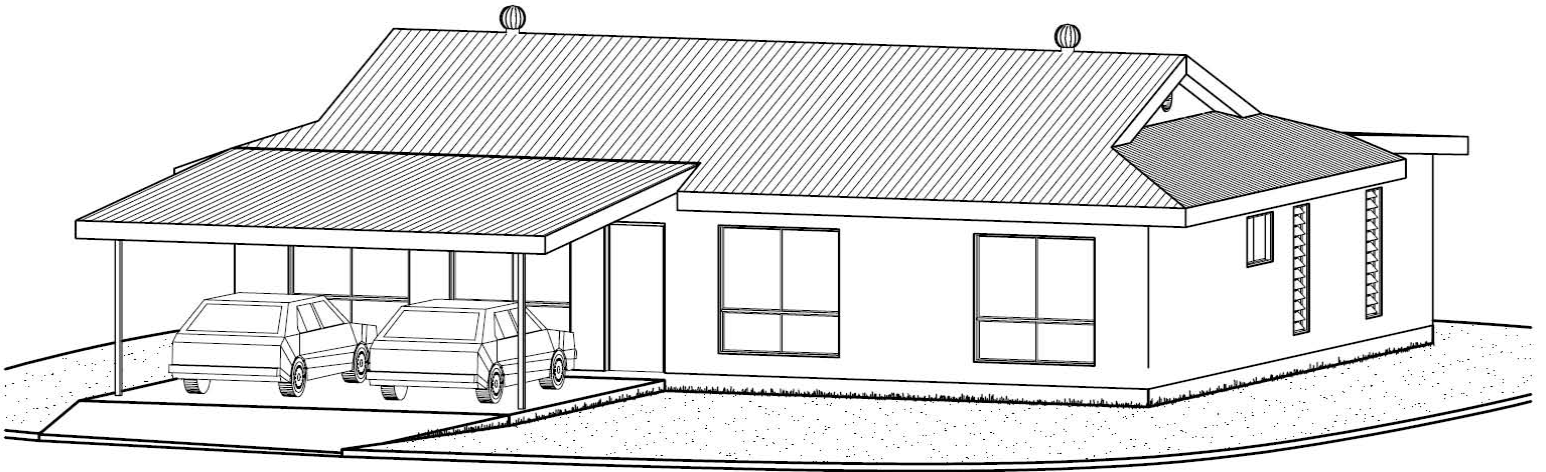
*No Hidden Costs. Just move in.
Fixed Price Contract with TCA*

The KOALA

*117 square metres of Internal Living area
41 square metres of Verandah including concrete
Colorbond Roof with heavy weight Thermo-foil Insulation
Security Screens to all sliding windows & glass sliding doors
Louvre Bars to all louvre windows
Ceramic floor tiles throughout
2700mm high ceilings
Fully rendered and painted
Built in wardrobes to all bedrooms
Built in linen cupboard
Ensuite to Master bedroom
2 x External taps
Kitchen Includes:
Breakfast Bar
Overhead cupboards
Fridge Unit
Stainless Steel Electric Underbench Oven, Electric Cooktop & Rangehood
Sink with 1 ½ bowls and 2 drainers*

Multi-Award Winning Builder



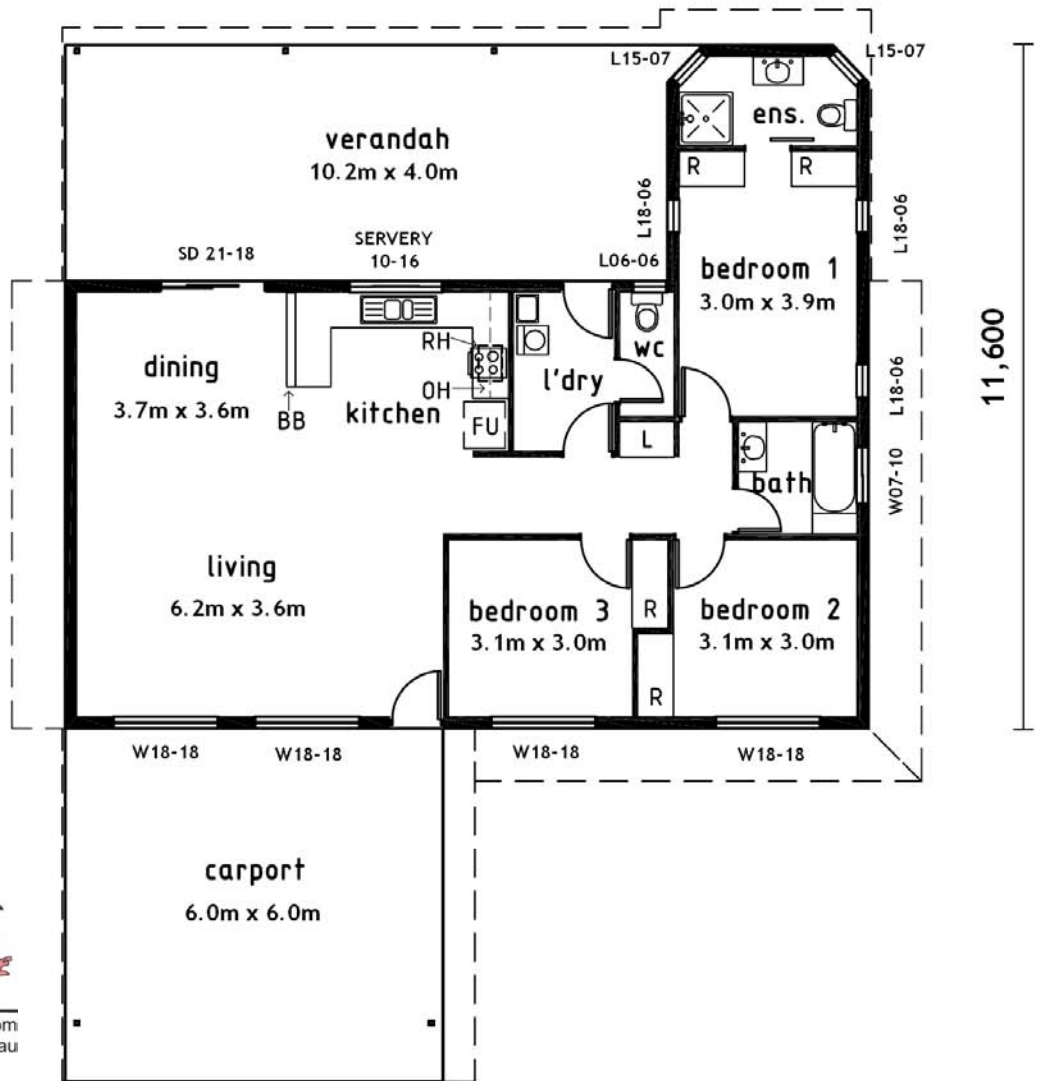


KOALA

13,600

FLOOR AREAS	
LIVING	116.58m ²
VERANDAH	40.99m ²
CARPORT	38.40m ²
	195.97m ²

7,600



11,600



BEARE HOMES
YOU BETTER GET ONE

ABN: 66 116 222 005

Ph: (08) 8932 9100 Email: bearehomes@bigpond.com
Fax: (08) 8932 9200 Website: www.bearehomes.com.au